

ORAGONX INTRODUCTION

To Better Understand the Oragonx Ecosystem

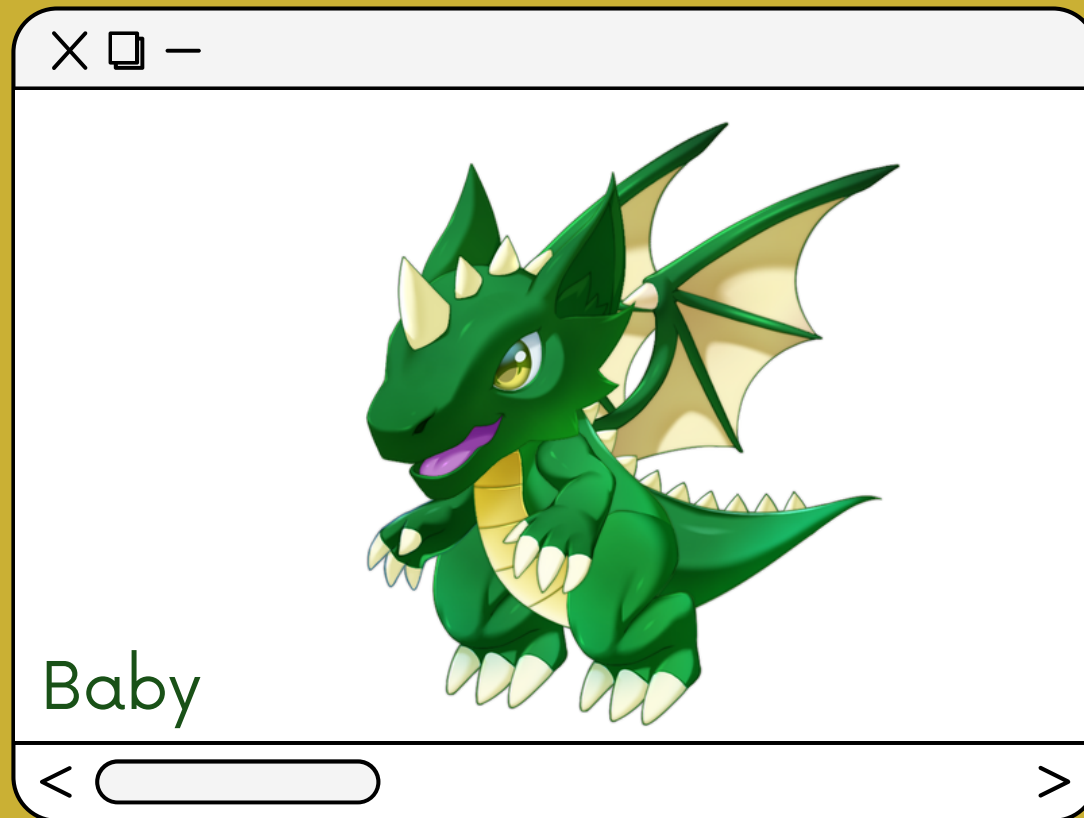
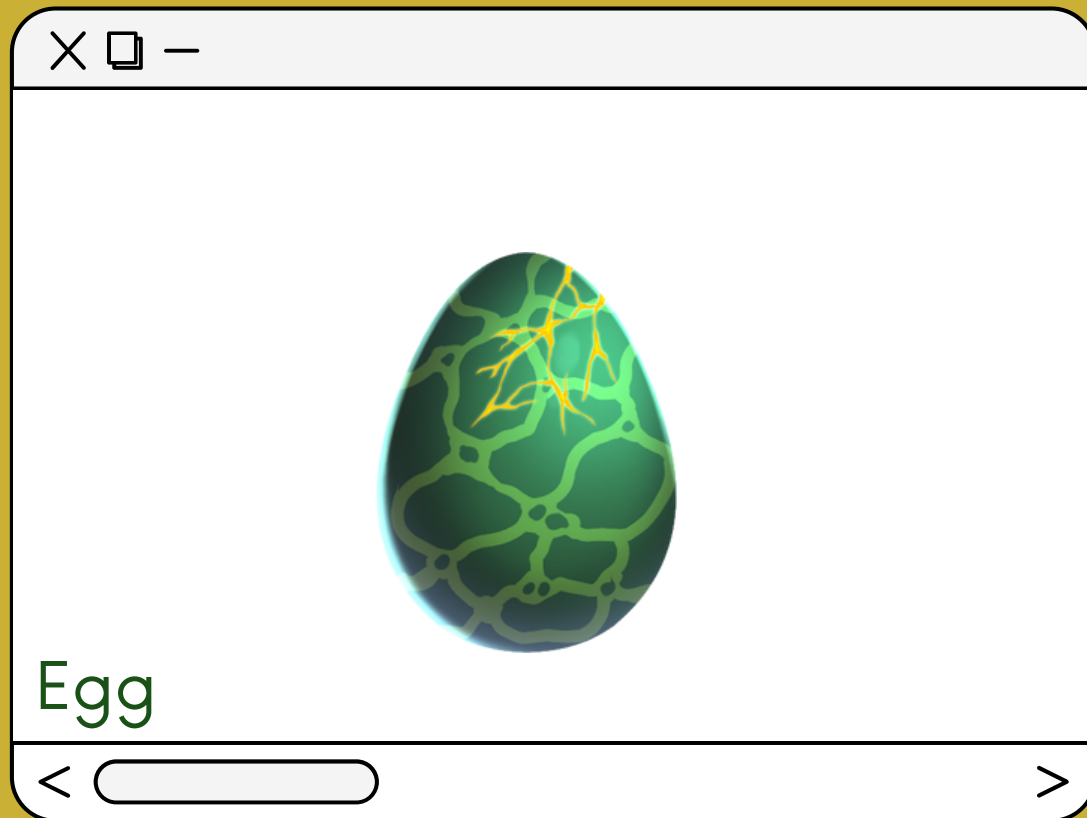
1	Introduction of the Dragons (Dragons rarity, back story, and stats)
2	Quality of Life Support Items (Incubator Battery, Food, and Love potion)
3	Battle in the Land of Oragon (Player VS Environtment and Player VS Player)
4	Future Update and Planning (Longetivity of the game ecosystem)





RARE

DRAGON#1 



70



20

*hatch finished status

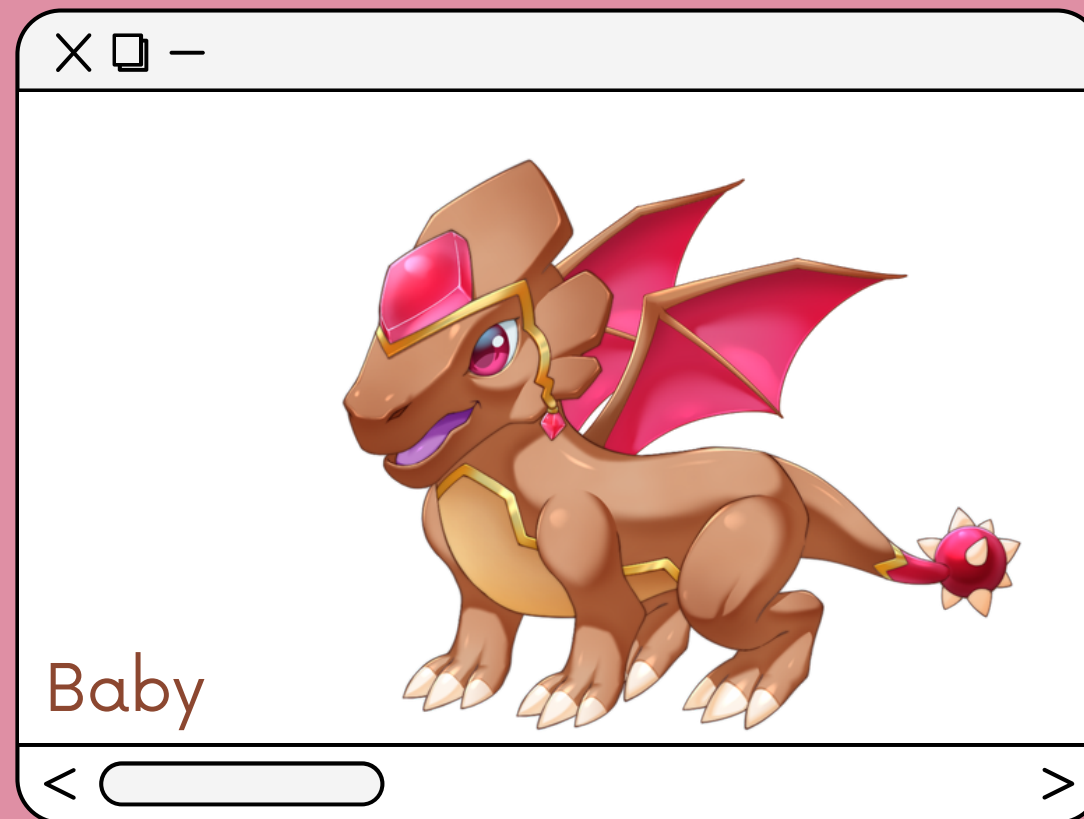
Meru

Meru is the guardian of mountains that are often seen in MahaMeru. He has the power of fire, which can turn the fire into stone.



RARE

DRAGON#2 🔍



70



20

*hatch finished status

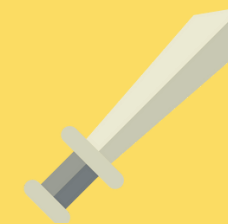
Akh

Akh was a legendary creature that lived in the desert near the Nile river. Akh's look was a mixture of animals. His body is like a snake, head, wing and his four legs resemble a bird. It is said this creature was a griffin legend inspiration in Europe.



RARE

DRAGON#3 🔍



70



20

*hatch finished status

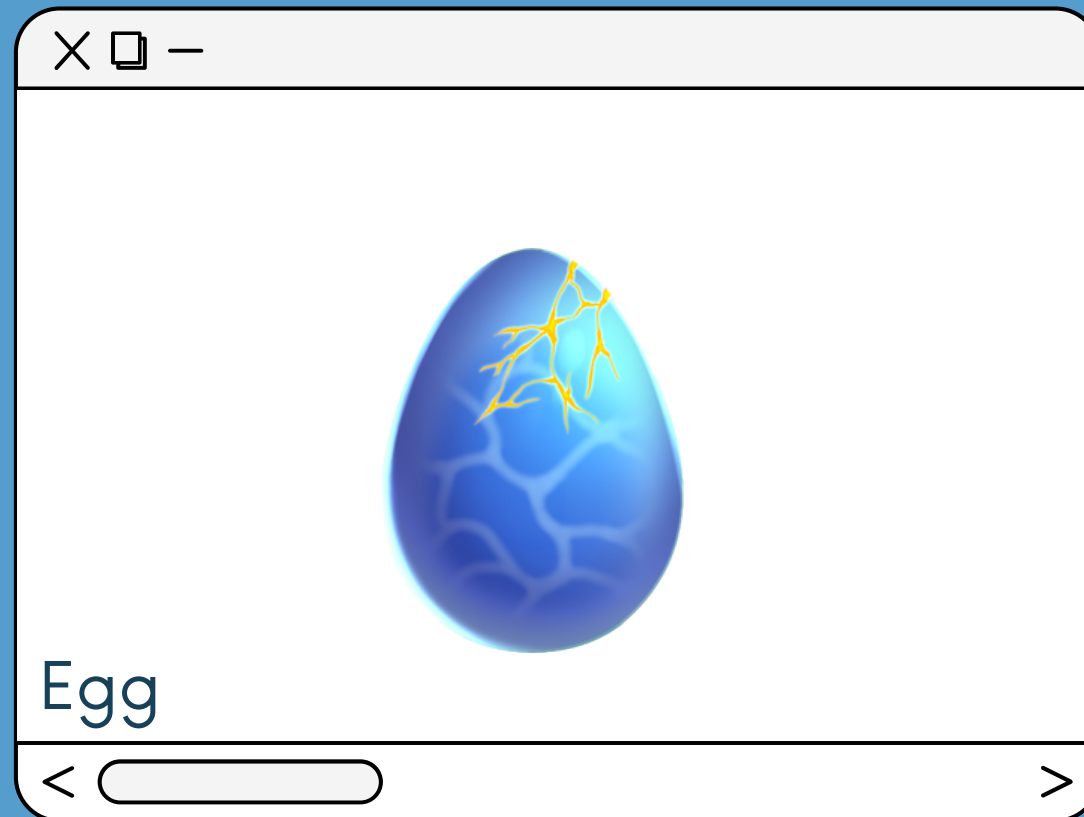
Ritra

the dragon is described as a giant snake without wings who lives under water. So godly the power of the dragon, people worship him as high as the god and goddess. Ritra wanted to dominate the water territory and greedily confiscated all the rivers which humans depended on.



RARE

DRAGON#4 



70



20

*hatch finished status

Feng

Feng was a weather sovereign. He can control wind, clouds and rain for human survival. Feng is described as a green giant snake, with horns and 4 legs but without wings.



EPIC

DRAGON#5 🔍



100



40

*hatch finished status

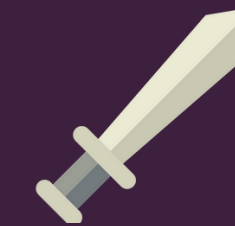
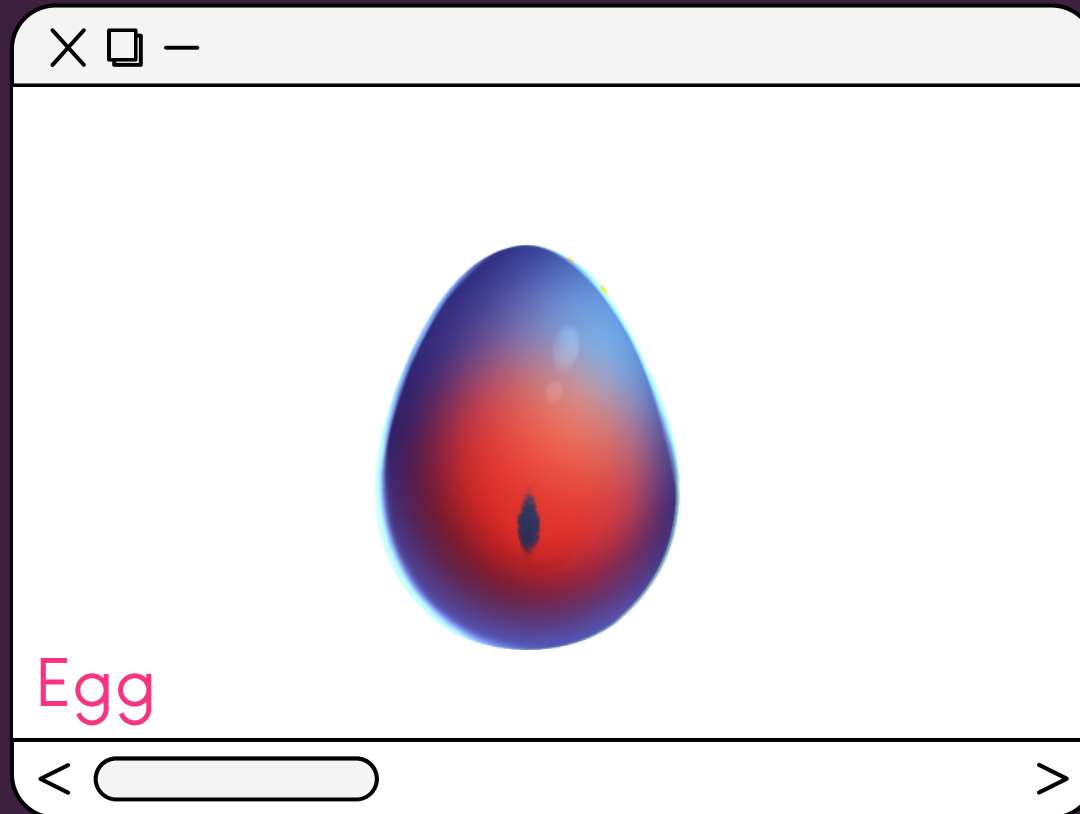
Dorch

Dorch's arrival was a death premonition for the ancient Scotland nation. Known as destruction spreader, Dorch was also terrorized human and made them as his food. He used his deathly dragon breath to kill all living creatures including plants, animals and humans.



EPIC

DRAGON#6 



120



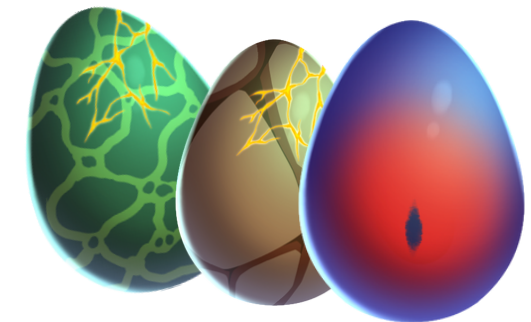
50

*hatch finished status

Metalicana

Metalicana's body is covered with silver-steel scales. Those scales made him look shielded with armour, covered from his neck to breastbone, shoulder, arms, knees, and claws. Around his chest until his calf, the scales are faded and change into chain looking scale Metalicana's head shape is almost square and he has a switch-like jawline.

Total Supply Dragon Pre - season



RARE



- 1000 Egg obtainable through gacha



- 500 Egg obtainable through breeding



EPIC



- 40 Egg obtainable through gacha



- 40 Egg obtainable through breeding



Hatching Requirement

hatching dragons requires 24 hours of accumulated battery time and will generate bonus stats according to the last used battery.

Battery



- Obtainable through battle, gacha, and marketplace



8 Hour + 10 Atk

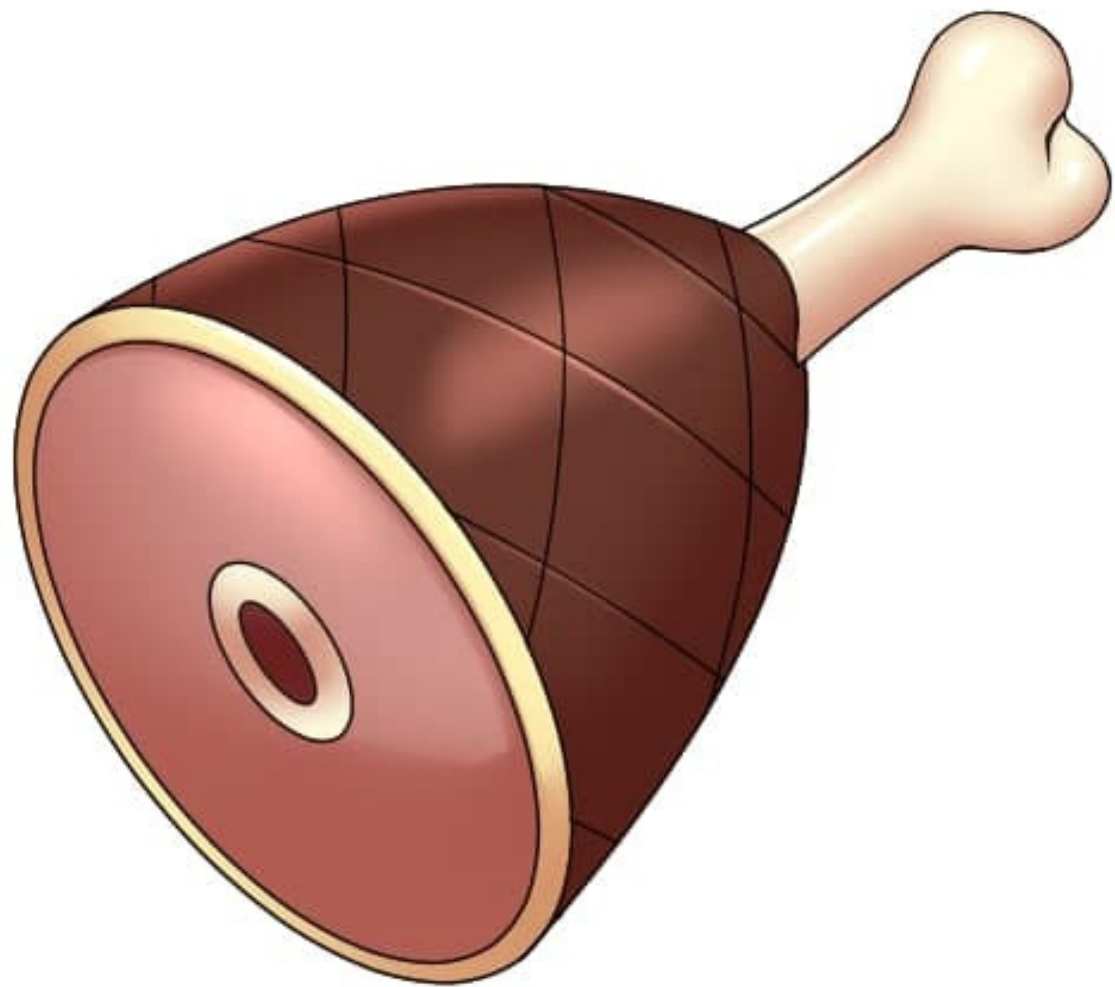


12 Hour + 20 Atk



24 Hour + 30 Atk

Food



- Obtainable through battle, gacha, and marketplace



- Recover missing HP from battle



- Recover Hunger bar to perform battle

Under Development and Future Expansion

Development details that will be updated and informed at a later date

INTERACTIVE CHAT

CLAN

PVP ARENA

DRAGON EVOLUTION

RAID BOSS

PVP LEADERBOARD

GLOBAL LEADERBOARD

CLAN BATTLE

LIMITED MISSIONS

MORE UPCOMING

REFFERAL SYSTEM

SEASONAL DRAGON

DNA BREEDING

PASSIVE EARNING